

bullhead-lilies. Frogs and dragonflies, among many others, are common inhabitants of ponds such as this.

RULES & REGULATIONS

1. All people are welcome to enjoy themselves without charge in these conservation areas of the Town from 1/2 hour before sunrise to 1/2 hour after sunset.
2. No cars, trucks or other powered vehicles or tools are allowed without the consent of the Conservation Commission or their agent.
3. "No Hunting" or "No Fishing" signs will be posted if such is intended. If not posted, areas may be hunted or fished in season with license and in accord with applicable law.
4. In these areas, no person shall cut, break, remove, deface, defile or ill use any structure, fence, sign, or have possession of any part thereof. No growing trees, bushes, plants or flowers shall be defaced or cut nor shall trails be cut or marked, nor dams built nor any structure such as lean to, bridge, tower, or handrail be constructed without authorization of the Conservation Commission. No vegetation, either live or dead, shall be removed from these areas.
5. Soliciting, advertising and business activities are strictly prohibited within these areas.
6. Overnight camping in these areas may be permitted to organizations having an adult leader present at all times. Every group shall obtain prior written permission from the Conservation Commission, must obtain a fire permit if open fires are planned and must each time notify the Police Department and the Natural Resources Department of both exact dates of occupancy and identity of the accompanying responsible adult.
7. The Conservation Commission cannot assume for the Town, liability for injuries, damage to property or other loss to persons going on such areas, who assume all the risks involved.
8. Littering and/or dumping (leaves, brush, trash, etc.) within these areas is strictly prohibited.
9. Violations of these regulations may result in fines of up to \$300 for each offense. Each day a violation continues shall constitute a separate offense.

PLEASE-DO NOT LITTER
Beware of Poison Ivy & Poison Sumac
ABOVE ALL, LET NATURE MAKE ALL THE CHANGES.

Dennis Pond Conservation Area

The Dennis Pond Conservation area is located on Willow Street in Yarmouthport, adjacent to Dennis Pond. The main trail is approx. 3,285 feet long and winds its way through a variety of woodland communities. There is also a side trail which follows closely along the shore line and rejoins the main trail later.

The initial section of the trail travels through an open woodland of mixed oak and pine. After proceeding down a steep slope, the trail makes its way through an area which was once an old bog. With time, the bog became suitable for the growth of red maple, *Acer rubrum*. Although the under story is thick, the trees are tall and compete with each other for sunlight, giving the forest an open effect. Much moss can be observed grooving along the trail and the old stream bed. The dominant shrub plant is sweet pepperbush, *Clethra alnifolia*, which gives the appearance of having its leaves arranged in broad circles. Many of the trees are supporting the high climbing, thorny Greenbrier, or *Smilax*. Upon further filling of this low area, the red maples may eventually be replaced by white oak, which is the next step in the succession of the bog.

After ascending to higher ground, the trail passes through an extensive patch of poison ivy before reaching a grove of white pine, *Pinus strobes*. The latter is easily recognized by the five needles per bundle and long, slender cones. These trees have grown quite tall and straight due to the competition for sunlight. Only the highest branches are green, and they form a canopy under which the lower branches cannot survive. Due to the lack of sunlight here, the forest floor supports very little vegetation. Pine seedlings are unable to grow in shade; moreover, any seedlings would have to push their way through the thick covering of pine needles on the ground. Much decay can be observed in a white pine forest in the form of fallen branches, which also provide shelter for small animals.

A shallow pond is located on the left, just before another grove of white pines. The trail passes through the remains of an old stone wall, which marks the edge of the grove, and emerges at the edge of Dennis Pond. The globular yellow flowers with larger, rounded leaves, which can be seen floating on the water, are

DENNIS POND CONSERVATION AREA



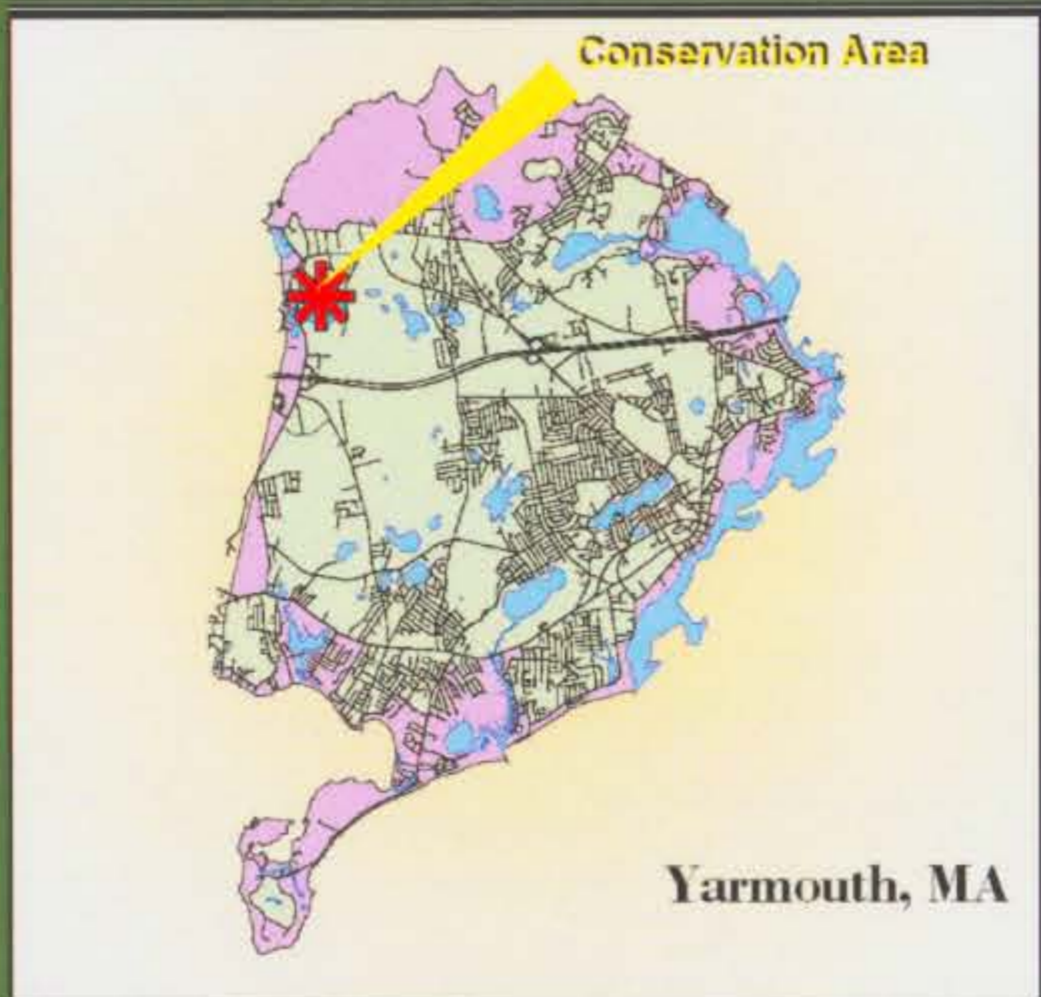
Town of Yarmouth Conservation Commission





Dennis Pond

Yarmouth Conservation Commission



Location: on Willow Street in Yarmouthport, adjacent to Dennis Pond.

TOTAL TRAIL DISTANCE: 0.93 miles

Legend

- Walking Trails
- Contour
- Lakes
- Town Bounds
- Wetlands
- Parking Area



Special thanks to Bradford Hall, Bruce Barrow, Tim Smith and Mark Adams for their time and efforts. Produced by Chris Sethness, ACC year VI.